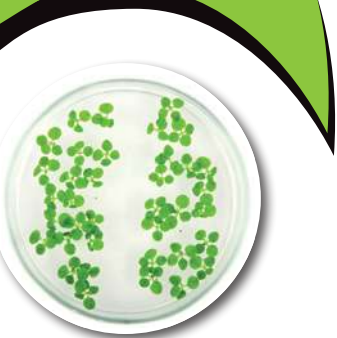


INNOVEA®

L+



INNOVEA®
MODULAR AND
HIGH PERFORMANCE CLIMATE
CHAMBERS FOR YOUR TRIALS
AND CROPS!



UNIFORMITY

For repeatable experiments and calibrated cultures:

- Optimized uniformities in temperature ($\pm 1^\circ\text{C}$ in one point), hygrometry ($\pm 7\%$ in one point), air circulation, air speed (0,25m/s max)
- Air cooled lamps frames



PERFORMANCE

- Easy to install with a height lower than 2.0m
- Wide temperature ($+4$ to $+40^\circ\text{C}$) and humidity (optional 40 to 95%)* ranges
- LED lighting
- Possibility of dimmable lighting, multiple spectra including horticultural ones
- Very good lighting uniformity between shelves and within shelves
- Multi-program controller



RELIABILITY

- Basic maintenance
- Systematic 24-hour factory test
- Choice of long-lasting materials (stainless steel and PVC interior)
- Materials compatible with plant growth and insect breeding
- Durability and 90% recyclability



MODULARITY

Multiple options for interior and exterior design, lighting, controlling



MULTI-FONCTIONNALITY

Tissue culture, germination and plant growth, pathological tests, insect and mollusc breeding...

CARACTERISTICS

INNOVEA L+

INNOVEA L1000

INNOVEA L1300

INNOVEA L1500

PHYSICAL CHARACTERISTICS

Internal volume (liters)	1038	1337	1521
External Dimensions mm	1200x900x2000	1500x900x2000	1800x900x2000
Internal Dimensions (mm)	1010x680x1390	1300x740x1390	1600x740x1390
Area per shelf (m ²)	0,62 (1,00x0,62)	0,82 (1,3x0,63)	1,01 (1,6x0,63)
Shelves	Till 5		
Weight (kg)	360	400	500
Material	Stainless steel internal frame and shelves		

CLIMATE MANAGEMENT

Air flow	Horizontal		
Air speed	Max 0,25m/s		
Temperature range (lights off)	+4°C à + 40°C		
Temperature range (lights on)	+8°C à + 40°C		
Temperature fluctuation in one spot (lights on/lights off)*	± 1°C / ± 0,3°C		
Temperature uniformity (on one shelf, lights on/lights off)*	± 2,5°C / ± 1°C		
Humidity control (option)*	40% à 95%		
Humidity fluctuation in one spot (lights on /lights off)*	± 7% / ± 3%		
Humidity uniformity (on one shelf, lights on/lights off)*	± 8% / ± 4%		

LIGHTING SYSTEM

Lighting type	Horizontal LEDs		
Light intensity (according to described configuration)	275µmol/m ² /s à 15 cm		

ELECTRICAL AND CONTROLLING DATAS

Controlling system	Multiprogram controller		
Input power	"220 - 240 V 50Hz / I max 11 A P : 1,3 kW"		

* depending on temperature, lighting and water supply

OPTIONS

Multiple options are available for the model L+: extensions of the basic enthalpic range, different lighting configurations, mechanical and electrical devices, controlling system complements ...

